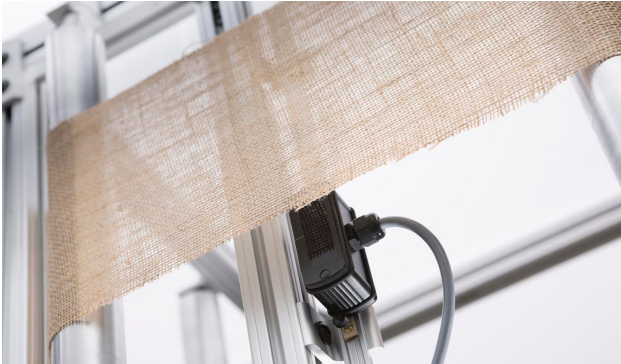


Highly Accurate Sensors Can Also Be Adaptive



Eliminate calibration. These sensors learn and adapt on the fly.

The Roll-2-Roll® Sensor can measure edge position, contrast position, the position of a line on the web, web width, count and monitor threads of any material without the need for any setup or calibration. The sensing principle relies on light scattering and spatial filtering properties of fiber optics to accurately determine the web position. The sensor technology adjusts automatically to the physical characteristics of the material and provides an accurate position measurement. Roll-2-Roll® Sensor with an appropriate Roll-2-Roll®

Controller is an affordable vision-like sensing system without the hassles of traditional vision systems.

Salient features of Roll-2-Roll® Sensor include: no setup or calibration, one sided compact sensor housing, high accuracy measurement, one sensor for any material and one sensor for multiple applications. The sensor applications include edge, center, line guiding, width measurement, mark detection, flag detection, thread counting and multiple strip width inspection.

GENERAL SPECIFICATIONS

Sensor Type	Fiber optic
Sensor Resolution	0.0635 mm or 0.127 mm
Sensor Range (mm)	48.77, 113.79, 225.04, 451.36, 901.45
Light Source	Infrared, Ultraviolet or White light

BENEFITS

- **Increase productivity** with no setup and calibration after product changeover
- **Save time** with plug-and-play operation
- **Reduce waste** with high accuracy and high precision measurement
- **Reduce downtime** with increased sensor reliability with no moving parts
- **Save money** with an inexpensive alternative to vision systems
- **Save money** with a single solution for multiple sensing applications instead of warehousing multiple sensors

To order (direct from factory):

By phone: **+1-888-290-3215 ext 01**

By e-mail: **sales@r2r.tech**

Online: **<https://r2r.tech/request-quotation>**

Your local contact is:

SENSOR OPTIONS

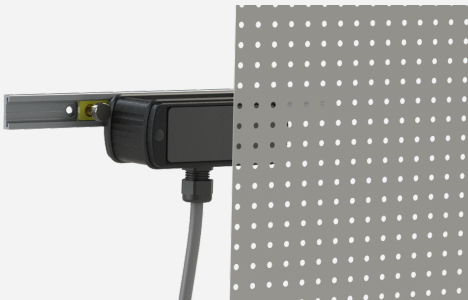
Infrared (850 nm)	WPS 48-IR QD	WPS 112-IR QD	WPS 221-IR QD	WPS 440-IR QD	WPS 900-IR QD
White light (Warm)	WPS 48-WL QD	WPS 112-WL QD	WPS 221-WL QD	WPS 440-WL QD	WPS 900-WL QD
Ultraviolet (385 nm)	WPS 48-UV QD	WPS 112-UV QD	WPS 221-UV QD	WPS 440-UV QD	WPS 900-UV QD

CONTROLLER OPTIONS

Input	24 VDC	Output (Analog)	0 - 10V, ± 10 V	Output (Analog)	0 - 24, 4 - 20 mA
Interface	Touch Screen	Output (Digital)	EtherNet/IP, PROFINET, EtherCAT		

SENSING APPLICATIONS

Edge Position Sensing



Contrast/Line Position Sensing



Contrast to Edge Measurement



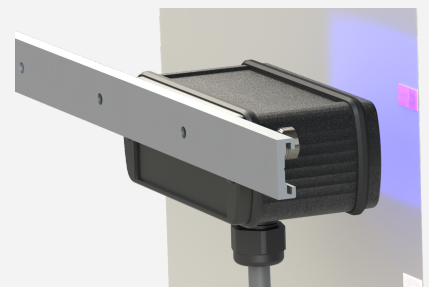
String Counting and Measurement



Width Measurement



Mark Detection (Visible or UV)



Roll-2-Roll Technologies LLC
 1110 S Innovation Way Dr
 Stillwater, OK 74074
 Phone: +1-888-290-3215
 Support Email: experts@r2r.tech
 Sales Email: sales@r2r.tech
 Website: <https://r2r.tech>